

2013 Security Assessment Update

Situation

Following the Sandy Hook Elementary School Incident we began to take an in depth assessment of the Security Standards and Practices we have in place here at the Charleston County School District. This was made even more pertinent because of the failed shooting at Ashley Hall.

Mission

During a January 9, 2013 CCSD Board workshop the Security team was tasked with coming back with recommendations on Security improvements that could be put in place in our schools. The mission was to partner with our local Public Safety partners to evaluate where we stand and where we can make improvements.

2013 Security Assessment Update

Deter

Detect

Delay

Respond

Buzz In/Buzz Out



12/8/2014

Mr. Mike Bobby, Acting Superintendent

3

Conversion from Magnetic locks to Strikes

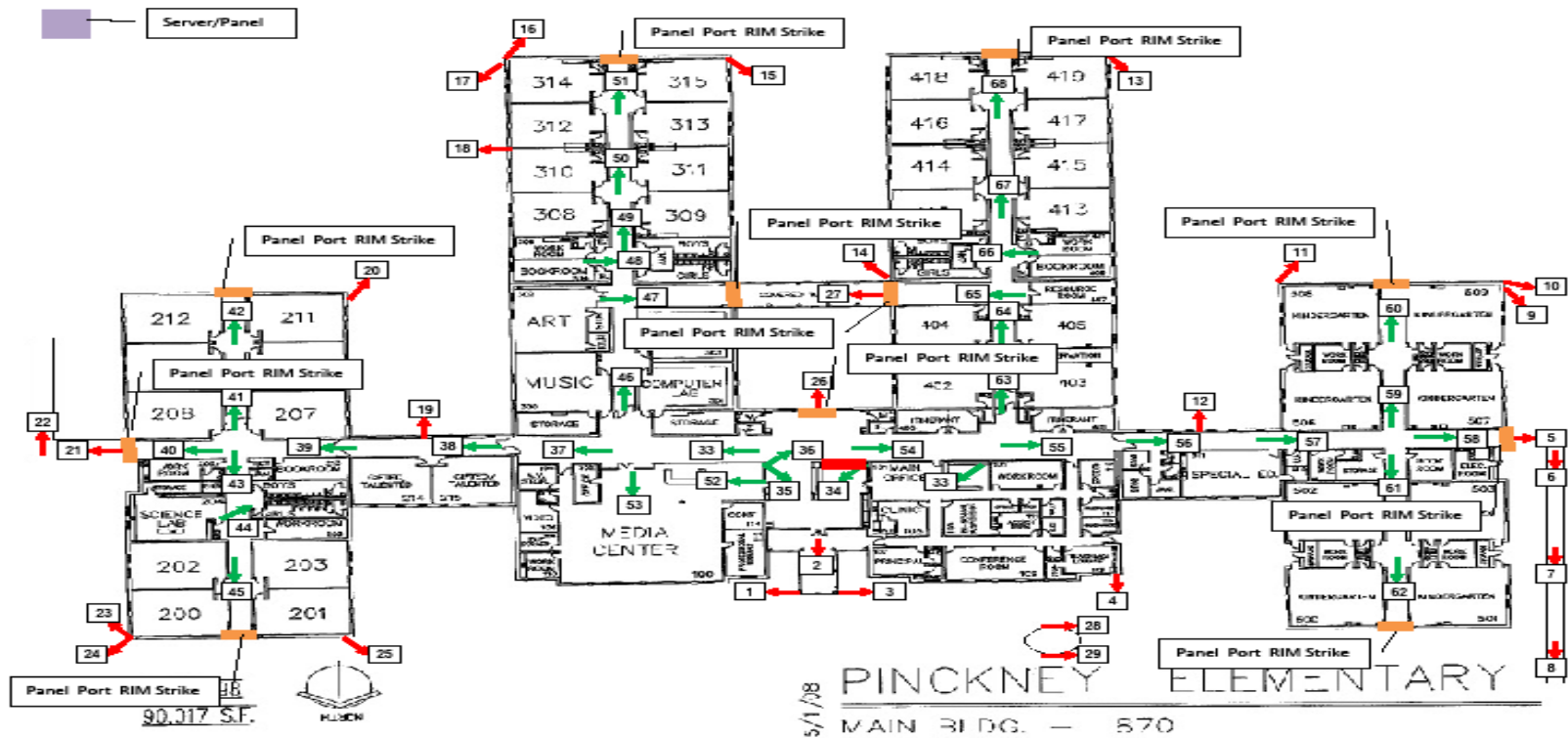


12/8/2014

Mr. Mike Bobby, Acting Superintendent

4

Surveillance and Access Control



12/8/2014

Mr. Mike Bobby, Acting Superintendent

5



12/8/2014

Mr. Mike Bobby, Acting Superintendent

6

School Based radios and After School radios



12/8/2014

Mr. Mike Bobby, Acting Superintendent

7

Fencing Needs



12/8/2014

Mr. Mike Bobby, Acting Superintendent

8

Fencing Improvements



12/8/2014

Mr. Mike Bobby, Acting Superintendent

9

Fencing Improvements

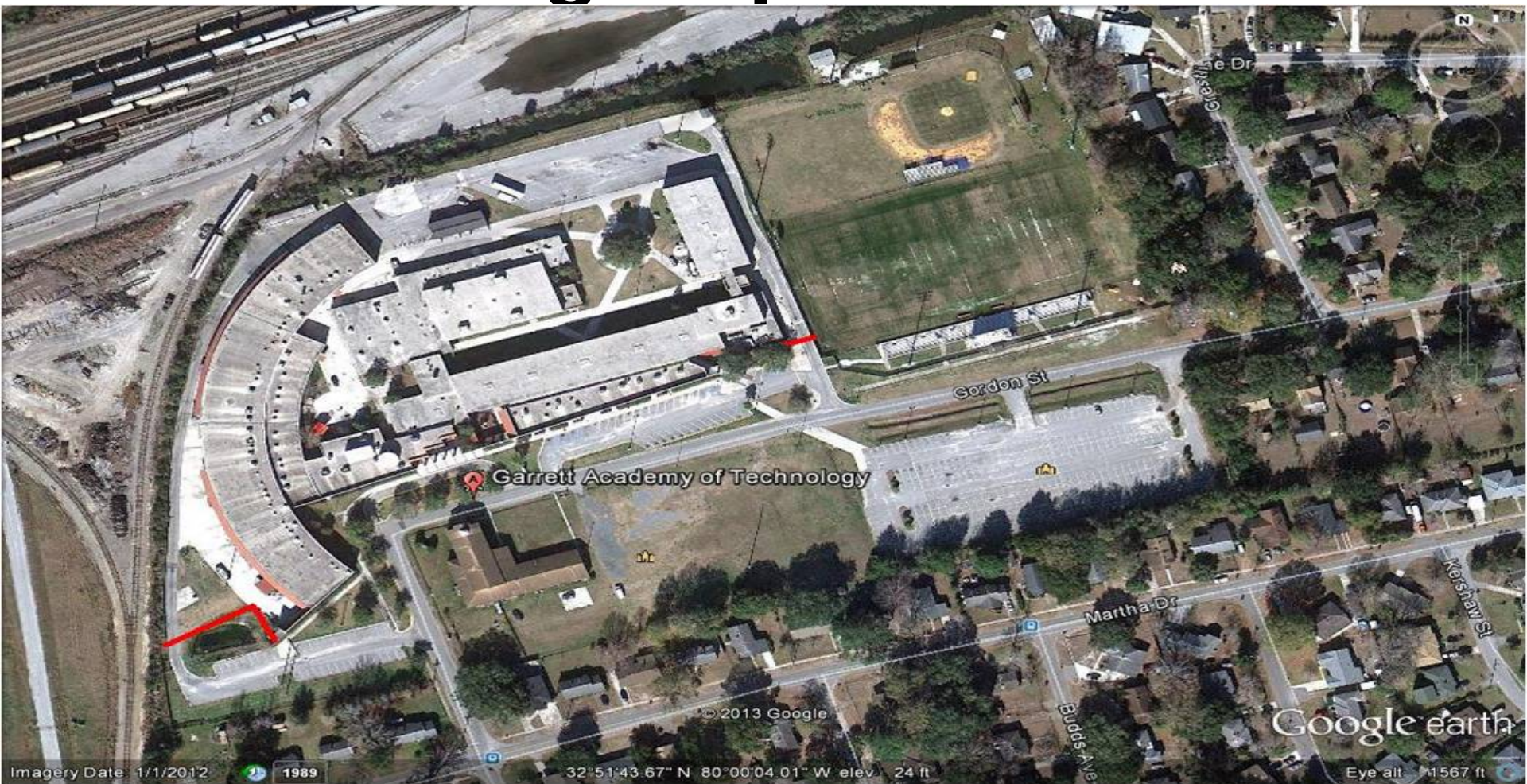


12/8/2014

Mr. Mike Bobby, Acting Superintendent

10

Fencing Improvements



Imagery Date: 1/1/2012

1989

32°51'43.67" N 80°00'04.01" W elev. 24 ft

Google earth

Eye alt 11567 ft

12/8/2014

Mr. Mike Bobby, Acting Superintendent

11

Walk-through metal detectors for High Schools



12/8/2014

Mr. Mike Bobby, Acting Superintendent

12

PA System Gaps



12/8/2014

Mr. Mike Bobby, Acting Superintendent

13

Training needs Assessment

- 2 additional Security and Emergency Managers/Trainers
- Preventative training, site assessment and inspection

Projected Cost Estimate

- \$1,900,000.00 in Capital Expenditures
(We actually spent \$1.6M)
- \$200,000.00 in recurring GOF
Expenditures (Estimated at \$100K for
the Training Position)